



Traverse des Sioux Library System

1400 Madison Ave., Suite 622
Mankato, MN 56001-5488

PHONE 507-625-6169
Toll-Free 800-450-6169
FAX 507-625-4049
www.tds.lib.mn.us

10/20/08

Changing the Windows Default Printer

The following procedure should fix the bug whereby Windows continually changes the margins of all documents so that the page appears blank.

You will need to check and, if necessary, change both Windows and WorkFlows for this to be effective

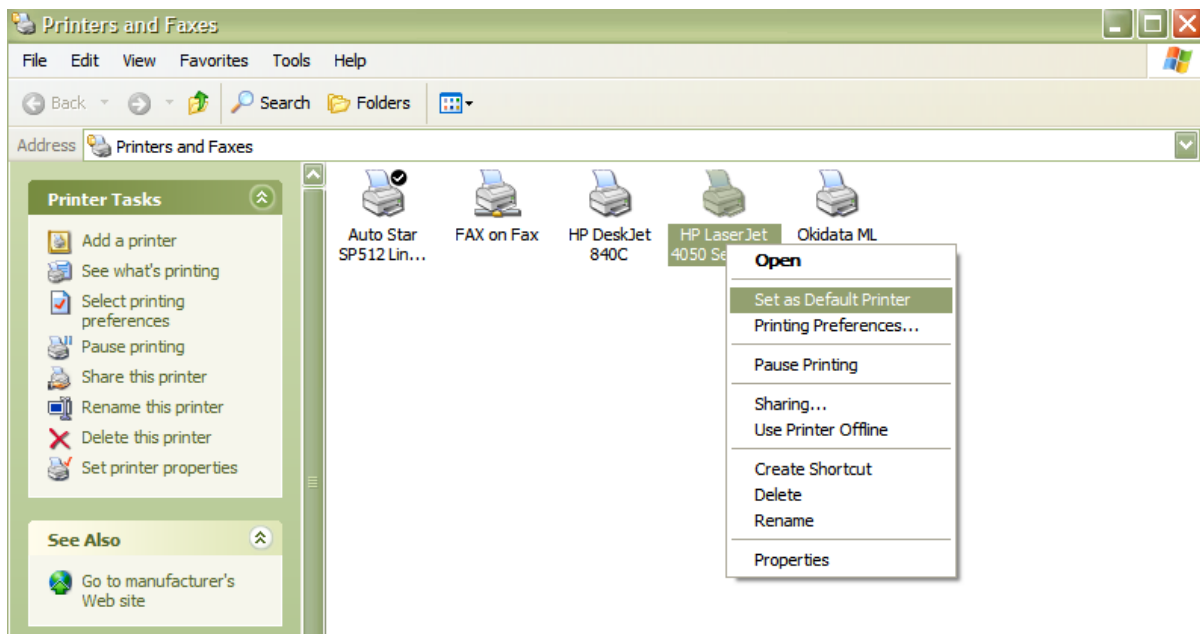
Windows 2000 - Click on the Start menu then Settings, then Printers.

Windows XP - Click on the Start Menu, then Printers and Faxes

A window will appear showing the icons of all the printers that are installed on your system.

Right-Click on the icon for the printer you want to use as the default. A menu will appear.

Left-Click on Set as Default Printer



To make sure the correct printer is now set as the default, Right-Click on the printer icon again. When the menu opens, a check mark should appear before Set as Default.

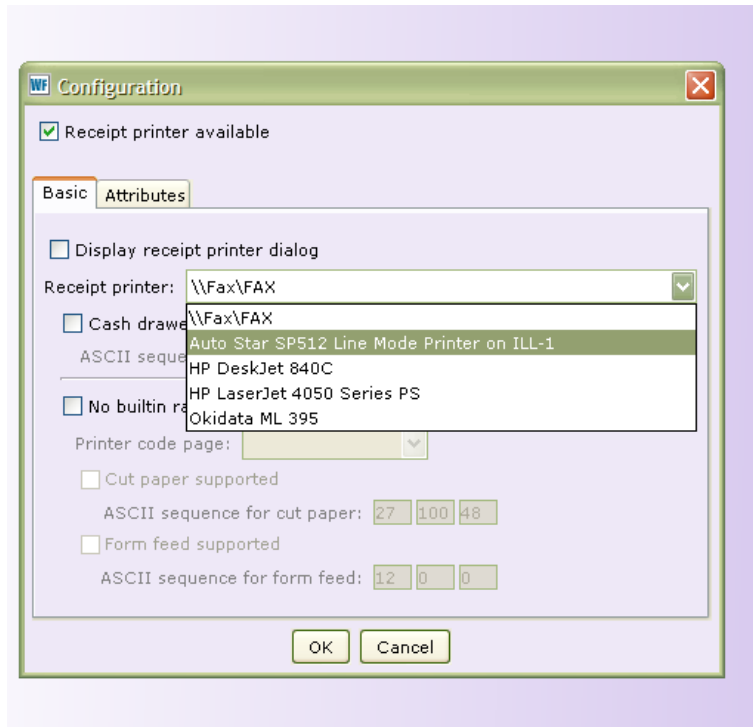
In Windows XP a check will appear next to the printer icon.

Once you have set a printer as the default, you can still print from other installed printers. The Print dialog box offers you a selection each time you print, but the default printer will be the one that appears automatically.

Setting up WorkFlows Printing

Click the “Preference” Menu Then “Peripherals” then “Receipt Printer...”

In the **Basic** Tab make sure the default receipt printer is the Star SP512



Click OK

Close WorkFlows.