



Traverse des Sioux Library System

1400 Madison Ave., Suite 622
Mankato, MN 56001-5488

PHONE 507-625-6169
Toll-Free 800-450-6169
FAX 507-625-4049
www.tds.lib.mn.us

11/04/08

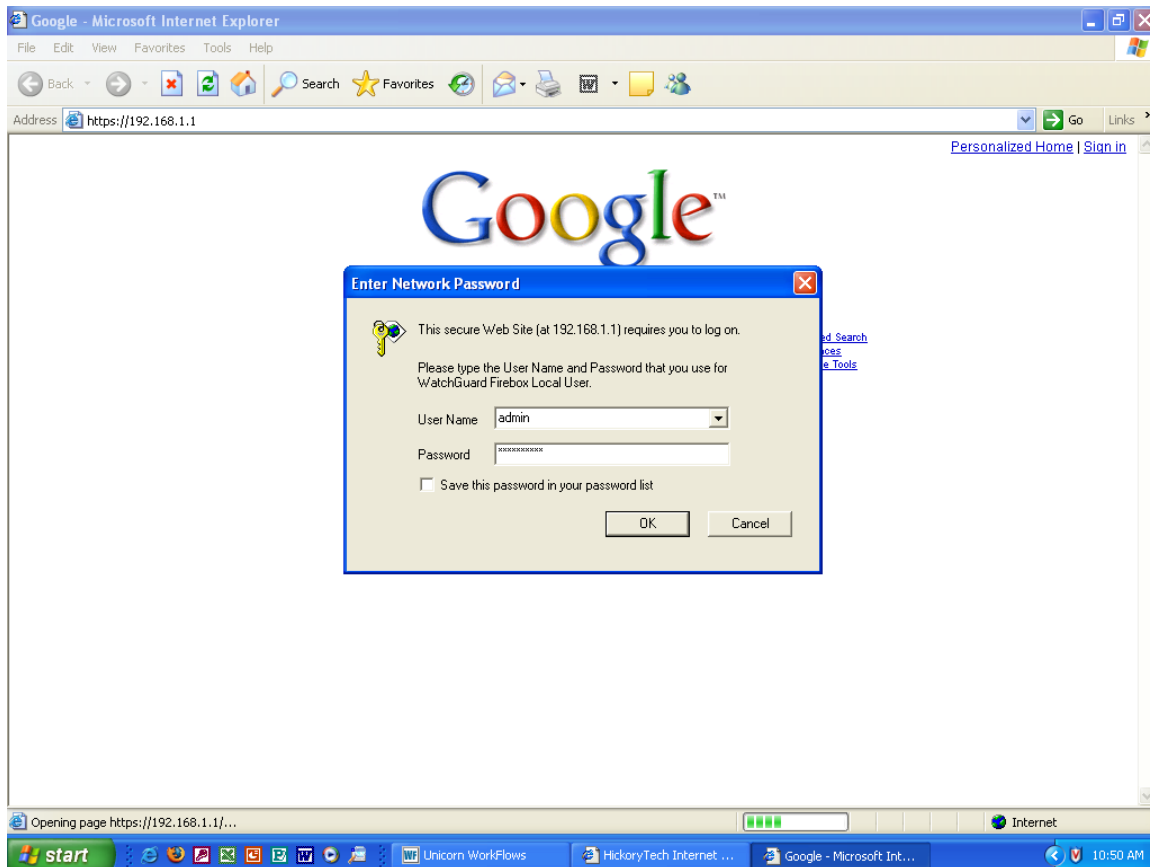
WatchGuard Edge IP Change

Before you begin you will need a public Ethernet address. Your Internet provider assigns this address to you. TdS Automation will determine and send it to you.

Before you begin, confirm that you have a working Internet connection. Then follow these steps to install your Edge:

Pick a computer from which to configure the router

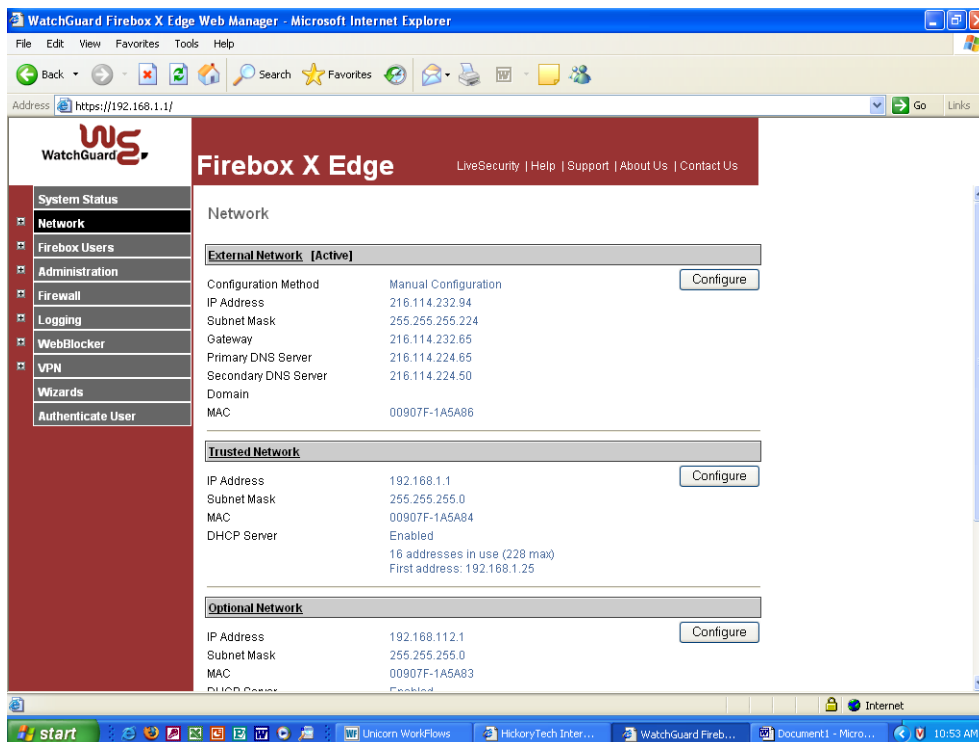
1. With your Web browser, go to the System Status page by typing the IP address of the SOHO 6, <https://192.168.1.1/> into the address field of Internet Explorer.
2. Log in (you will have been given a user name and password)



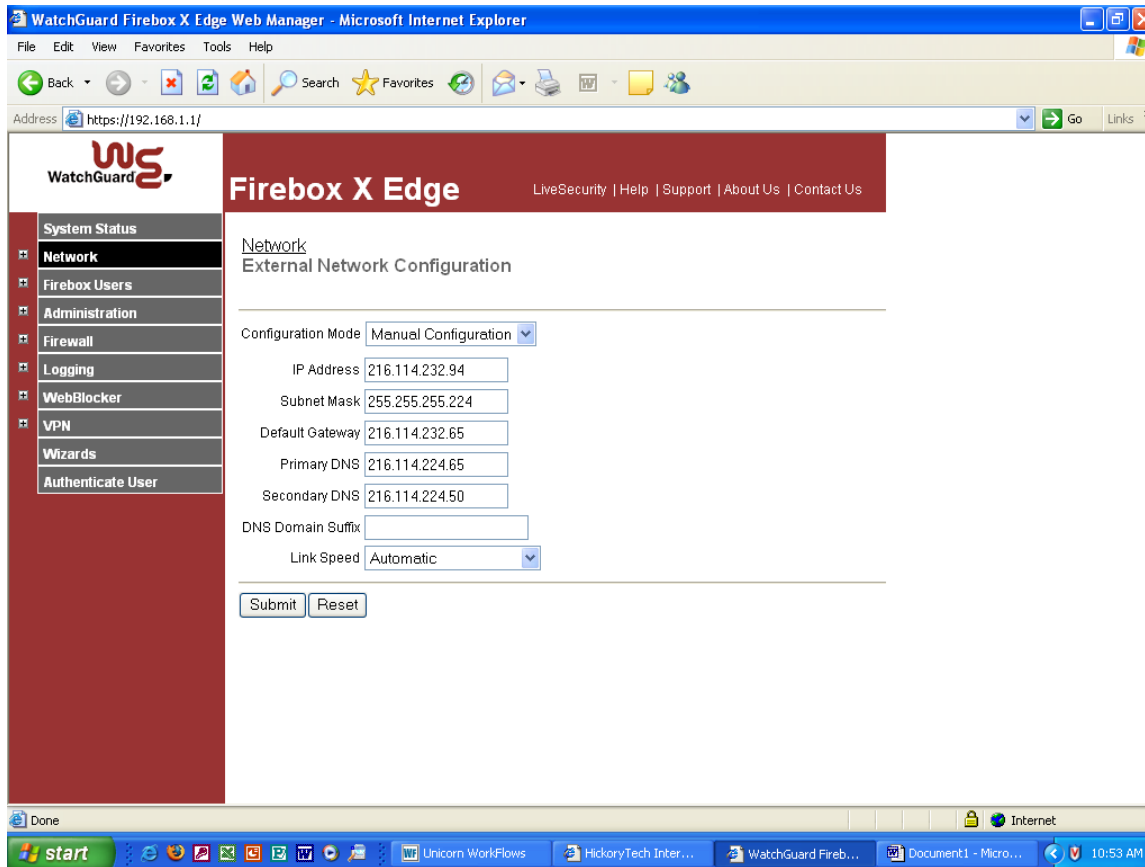
3. From the navigation bar on the left side, click **Network**



- 4. Click **External**.
- 5. Select **Manual Configuration**



6. Enter the TCP/IP settings that were given to you by TdS.



7. Reboot the firewall

8. To test that your Internet connection is working properly, use your web browser to go to www.watchguard.com.