



Traverse des Sioux Library System

1400 Madison Ave., Suite 622
Mankato, MN 56001-5488

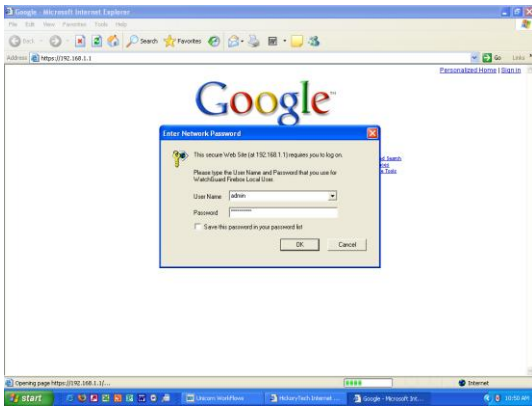
PHONE 507-625-6169
Toll-Free 800-450-6169
FAX 507-625-4049
www.tds.lib.mn.us

11/04/08

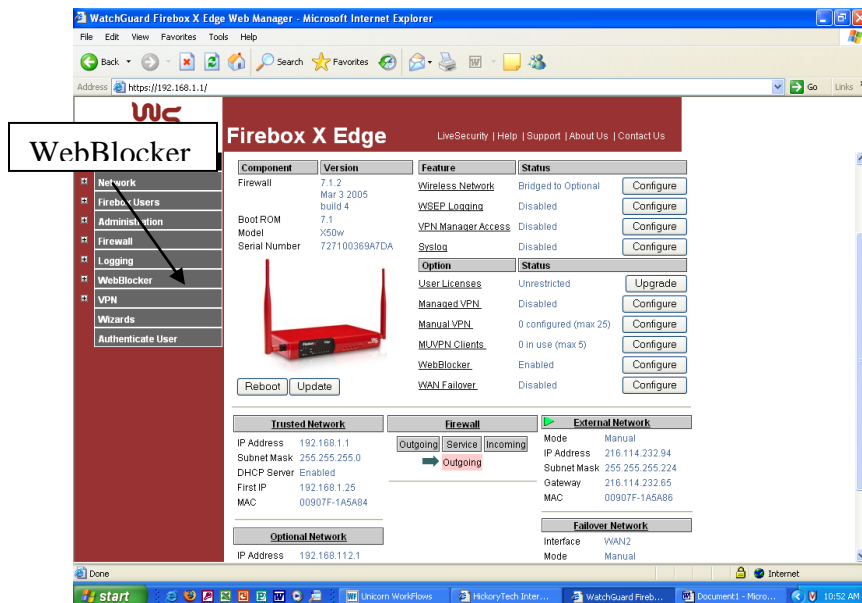
WatchGuard Edge WebBlocker Setup

How WebBlocker Works WebBlocker uses a database of web site addresses controlled by SurfControl®, a web filter company. When a user on your network tries to connect to a web site, the Firebox® X Edge e-Series examines the WebBlocker database. If the web site is not in the database or is not blocked, the page opens. If the web site is in the WebBlocker database and is blocked, a notification appears and the web site is not displayed.

1. With your Web browser, go to the System Status page by typing the IP address of the Edge <https://192.168.1.1/> into the address field of Internet Explorer.
2. Log in (you will have been given a user name and password)



3. From the navigation bar on the left side, select **WebBlocker > Settings**



4. The first WebBlocker page in the Firebox® X Edge e-Series configuration pages is the WebBlocker Settings page

WebBlocker Settings

Enable WebBlocker

Enable WebBlocker override

Full Access Password

Confirm Password

Inactivity Timeout (minutes)

When the WebBlocker server is unavailable, access to all sites is

When the WebBlocker license expires, access to all sites is

Message for blocked user field:

Submit

5. Select the Enable WebBlocker check box to turn on the WebBlocker feature.
6. If you want to allow Staff to bypass WebBlocker if they know the full access password, select the Enable WebBlocker override check box.
7. Type a password in the Full Access Password field, then type the same password again in the Confirm Password field
8. Type a number, in minutes, in the Inactivity Timeout field. 30 minutes is recommended
9. Use the **When the WebBlocker server is unavailable**, drop-down list to select if the Firebox X Edge is to allow or deny all traffic when it cannot connect to the WebBlocker server. If you allow web traffic when the WebBlocker server is unavailable, each user who sends a web request must wait 45 seconds for the Firebox X Edge to try to connect to the WebBlocker server and time-out. After 45 seconds, the Edge allows access to the web site. When the Edge can connect to the WebBlocker server again, it will automatically start to apply WebBlocker rules again.

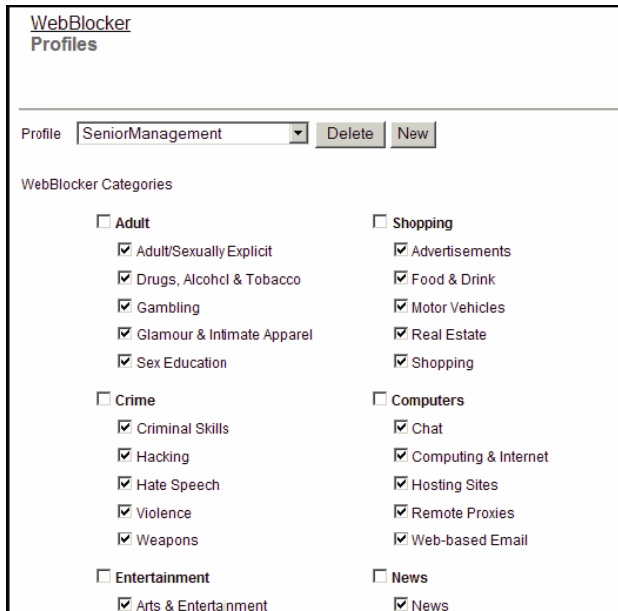
The 45-second wait may be unacceptable – Alternatively you can manually disable WebBlocker when the server is unavailable

10. Use the **When the WebBlocker license expires** drop-down list to allow all web traffic if the WebBlocker subscription expires.

Modify the Default Profile

A WebBlocker profile is a set of restrictions you apply to users or groups of users on your network. You can create different profiles, with different groups of restrictions. For example, you can create a profile for employees with more restrictions than for Patrons.

11. From the navigation bar, click **WebBlocker > Profiles**



The screenshot shows the 'WebBlocker Profiles' page. At the top, there is a navigation bar with 'WebBlocker' and 'Profiles'. Below this, there is a 'Profile' dropdown menu set to 'SeniorManagement', with 'Delete' and 'New' buttons. The main section is titled 'WebBlocker Categories' and contains a grid of categories with checkboxes. The categories and their sub-items are:

Category	Sub-item	Checked
Adult	Adult/Sexually Explicit	Yes
	Drugs, Alcohol & Tobacco	Yes
	Gambling	Yes
	Glamour & Intimate Apparel	Yes
	Sex Education	Yes
Crime	Criminal Skills	Yes
	Hacking	Yes
	Hate Speech	Yes
	Violence	Yes
	Weapons	Yes
Entertainment	Arts & Entertainment	Yes
Shopping	Advertisements	Yes
	Food & Drink	Yes
	Motor Vehicles	Yes
	Real Estate	Yes
	Shopping	Yes
Computers	Chat	Yes
	Computing & Internet	Yes
	Hosting Sites	Yes
	Remote Proxies	Yes
	Web-based Email	Yes
News	News	Yes

12. The **Profiles** page appears

13. From the **Profile Name list** choose *Default*

14. In **WebBlocker Categories** select the categories of web sites to block by clicking the check box adjacent to the category name. If you select the check box adjacent to a category group, it automatically selects/unselects all of the categories in that group

15. To Meet CIPA requirements only the very first category – Adult/seually Explicit need be checked

16. Click **Submit**.